

<p style="text-align: center;">Jells Park Primary School Drug Education Policy</p>
--

Purpose:

- To ensure all students feel safe from harm and supported to achieve their full potential.
- To provide students with the knowledge and information to make educated choices

Guidelines:

- J.P.P.S aims to enhance the emotional, physical and social health of all students. Wherever possible the school will inform and support families and link to student support services officers and or community service providers for counselling and treatment.

Implementation:

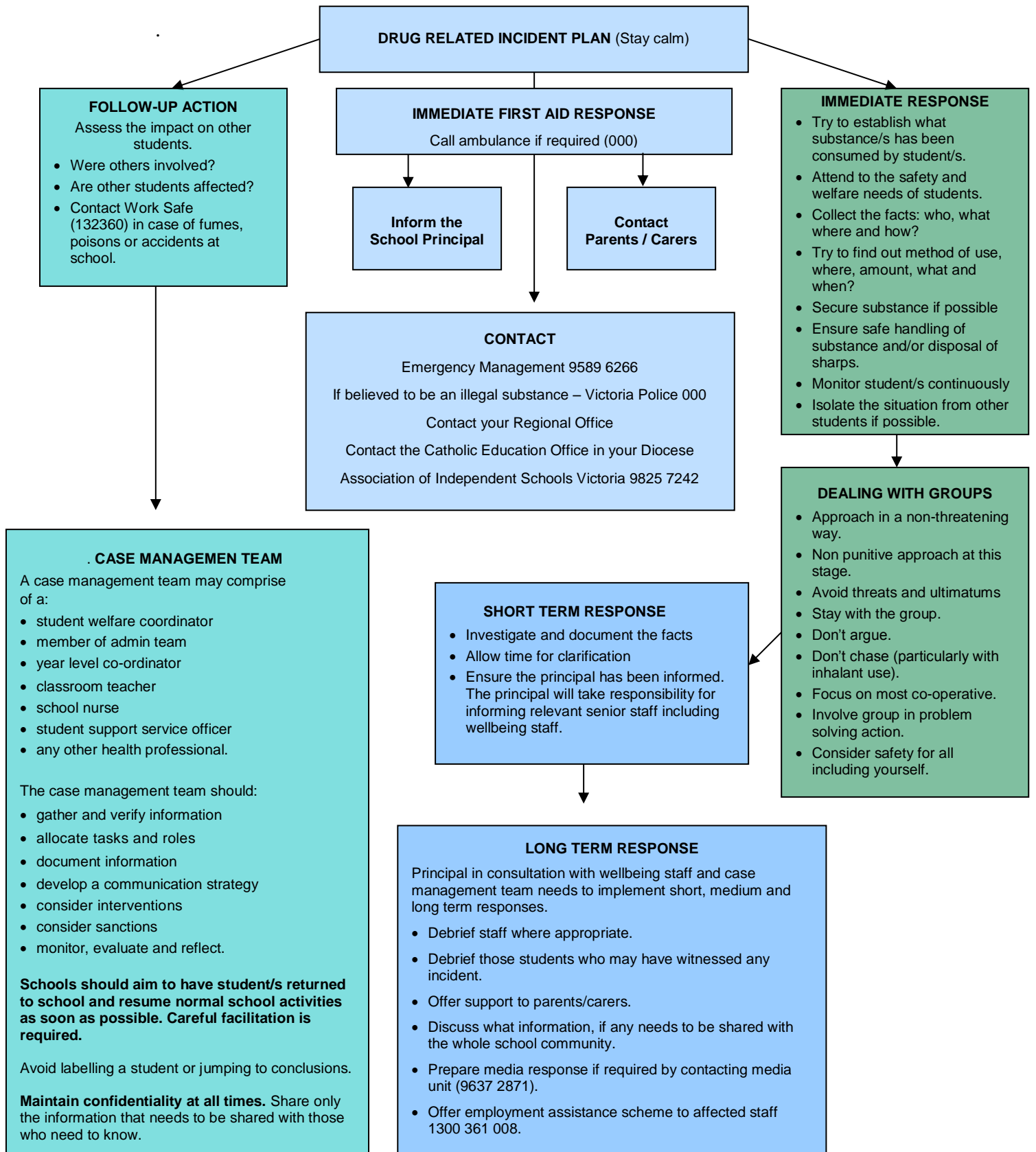
- Staff will be aware of the current departmental requirements regarding drug education for the students they are teaching
- The school will develop and maintain a health-promoting environment.
- Staff will be provided with the resources to deliver ten hours of drug education per year level per year

Evaluation:

Successful implementation of this policy will be measured by:

- Feedback from teachers, parents and students regarding the effectiveness of this program.

This policy will be reviewed as part of Jells Park Primary School's four yearly review cycle, unless otherwise indicated



The following resources provide additional frameworks for schools and support systems for students in relation to drug issues in schools.

- [Keeping in Touch](#): An intervention framework for school staff – Page 5. Developing a procedural framework – Page 7.
- [Retention and Reintegration](#): Cycle of intervention – Page 5. Summary of a young person involved in a drug-related incident - Page 8. Reintegration of students after relapse – Page 11.
- [Preventing drug-related harm – A guide for the Student Welfare Coordinator](#). This resource provides a set of evidence-based guidelines and tools to assist schools and their communities to address truancy and the associated risk of problematic substance use.